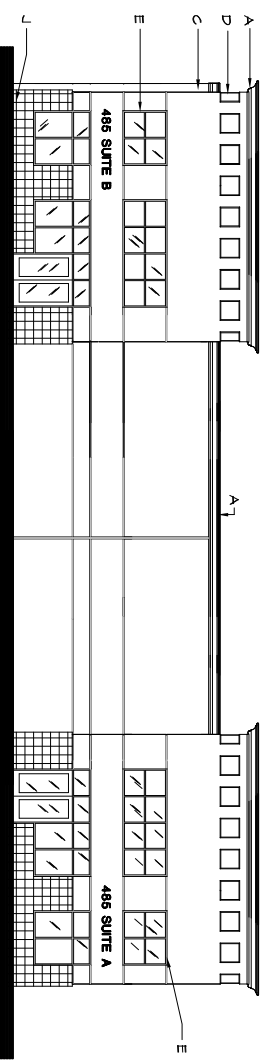
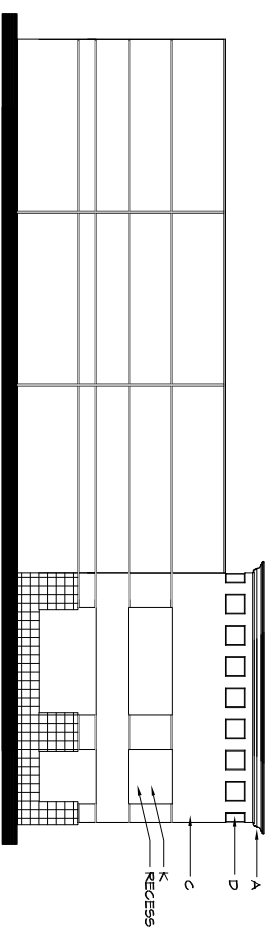


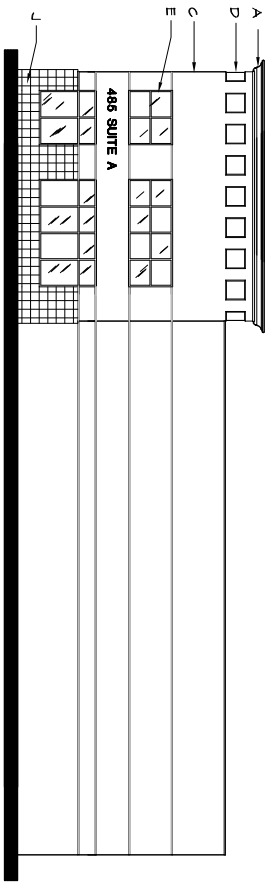
NORTH WEST (REAR) ELEVATION



SOUTH EAST (FRONT) ELEVATION

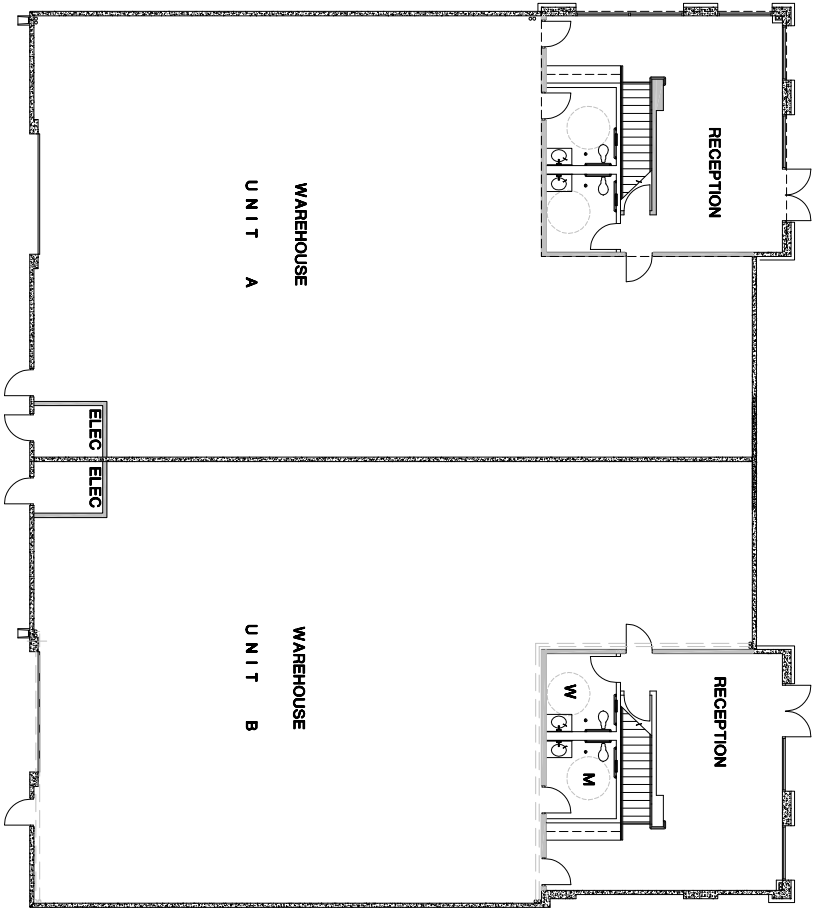


SOUTH WEST (LEFT) ELEVATION

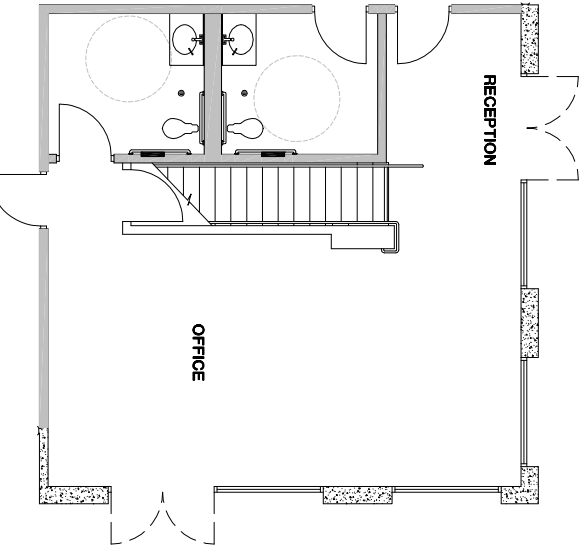


NORTH EAST (RIGHT) ELEVATION

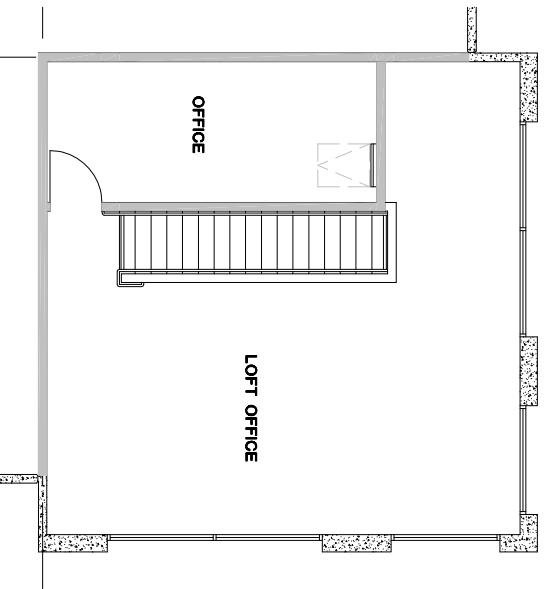
EXTERIOR MATERIAL SCHEDULE		COLOR SELECTION	PAINT COLOR IS
MARK	MATERIAL DESCRIPTION	COLOR SELECTION	PAINT COLOR IS
A	CUSTOM SHAPED PLANT-ON POLYURETHANE FOAM DECORATIVE SHAPED PLANT-ON BY ARCHITECTURAL FOAM PRODUCTS OR EQUAL W/ 4.5 FIBERGLASS NETTING AND CEMENTITIOUS ACRYLIC COATING AND FINISH PAINT COAT.	PAINT COLOR:	FAIR IVORY 858T
B	V CUT REVEAL IN CONCRETE SURFACE PER SECTION DETAILS	PAINT COLOR:	SPICE VARIETY 865T
C	TILT-UP CONCRETE WALL	LOWER MAINSCOT UPPER MAINSCOT	FAIR IVORY 858T WARRIOR KING 8594
D	2" RECESSED RELIEF IN CONCRETE WALL SECTION	PAINT COLOR:	FAIR IVORY 858T
E	NOMINAL 2 X 4 ALUM STOREFRONT FRAME	ANODIZED ALUM.	DARK BRONZE
F	SECTIONAL ROLL UP METAL DOOR ASSEMBLY	COLOR SELECTION	TO MATCH FAIR IVORY 858T
G	METAL DOOR AND STEEL FRAME	COLOR SELECTION	DARK BRONZE
H	METAL PARAPET CAP ASSEMBLY	PAINT COLOR	SPICE VARIETY 865T
J	12" x 12" SLATE TILE DALTILE CALIFORNIA GOLD 5700	PAINT COLOR:	BIG ON BEIGE 8566
K	TILT-UP CONCRETE WALL	PAINT COLOR:	



FLOOR PLAN



TYPICAL OFFICE PLAN LOWER FLOOR



TYPICAL OFFICE PLAN UPPER FLOOR

NOTICE
THIS DRAWING AND ALL INFORMATION THEREON IS THE PROPERTY OF HC&D ARCHITECTS AND SHALL NOT BE COPIED OR USED EXCEPT FOR THE PURPOSE FOR WHICH IT IS EXPRESSLY FURNISHED. THE DRAWING AND ANY COPIES THEREOF, PARTIAL OR COMPLETE, SHALL BE RETURNED TO THE OWNER UPON DEMAND.

NO.	REVISION	DATE	BY
1	PC 06-2653.1,4,1,5,1,6,1	8-2-06	C.L.
2	PC 06-2653.1,4,1,5,1,6,1	11-3-06	C.L.
3	OWNER CHANGES	1-8-07	C.L.



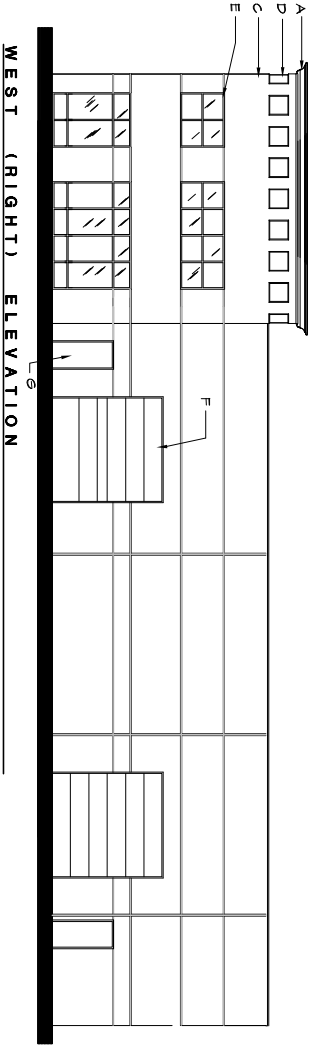
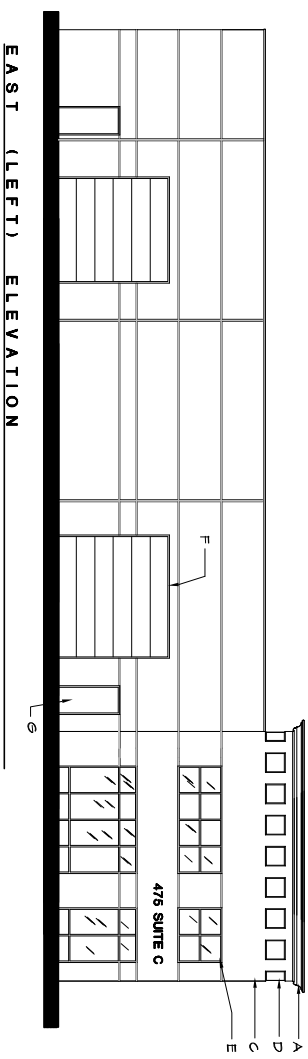
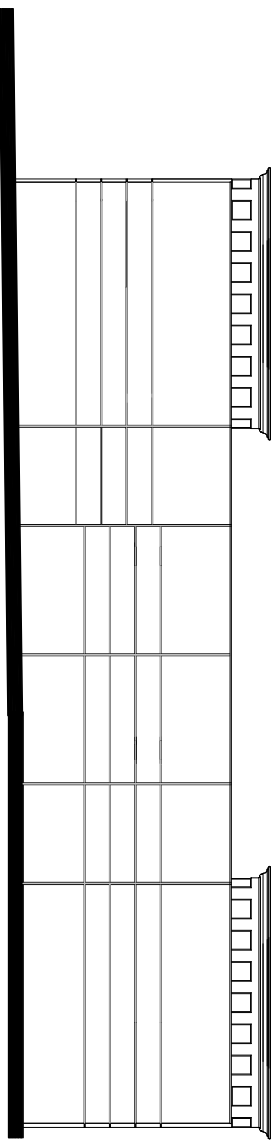
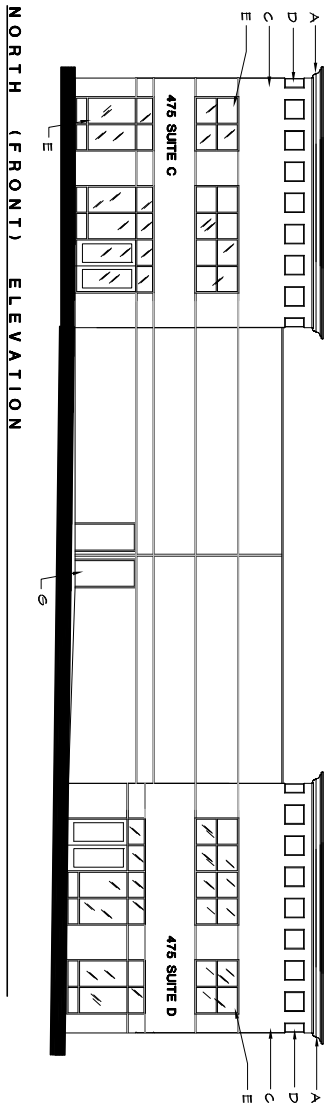
PREPARED BY:
HC&D ARCHITECTS PC
CONSULTING
280 E. RINGGON STREET
SUITE 200
CORONA, CALIFORNIA 92709
PHONE: (714) 991-1111
FAX: (714) 991-4224

PREPARED FOR:
OMNI WEST GROUP
RIVERSIDE, L.L.C.
PHONE: (714) 336-2433
FAX (714) 669-2433

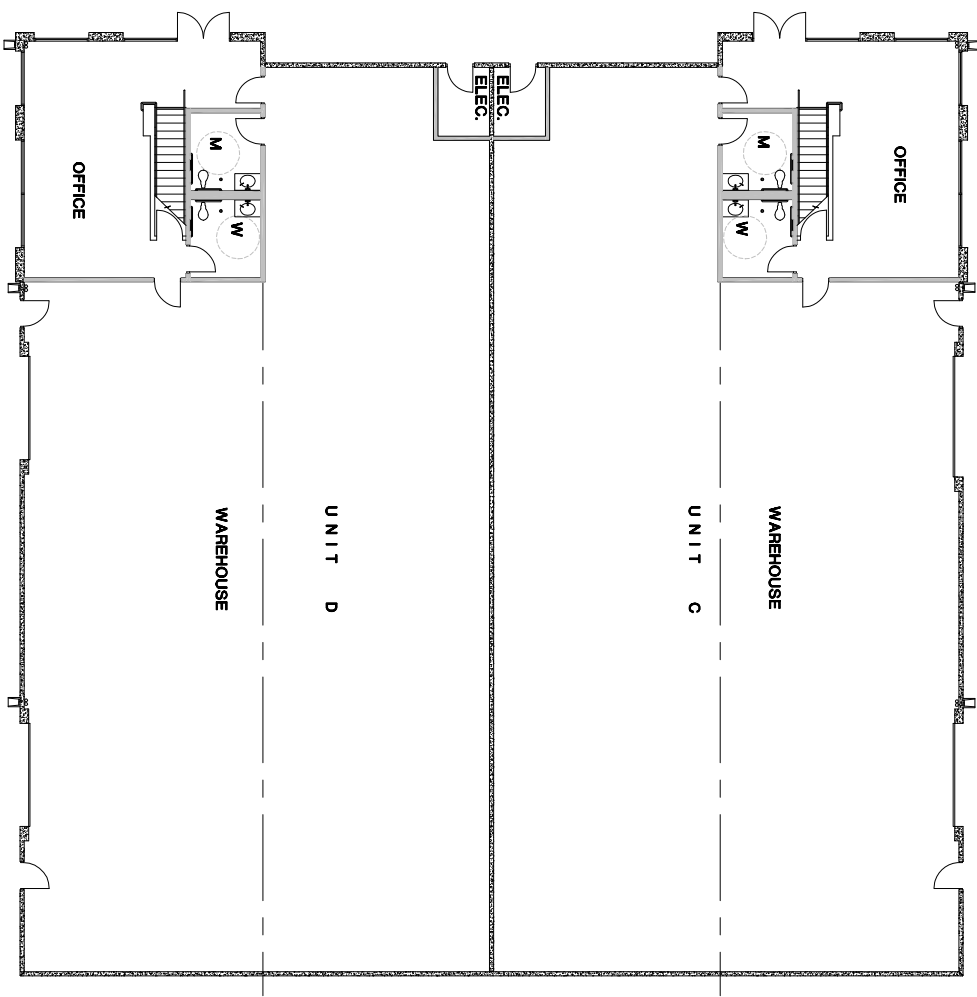
SHEET TITLE:
BUILDING UNITS "A" AND "B"
FLOOR PLAN & EXTERIOR ELEVATIONS
RIVERA INDUSTRIAL PARK
465 RIVERA ST.
RIVERSIDE, CALIFORNIA

DESIGNED BY: R.T.
CHECKED BY: C.S.
DATE: 07-15-05
ISSUE DATE: 1-8-07
SCALE: 1/8" = 1'-0"
JOB NO.: 05092
CADD FILE:

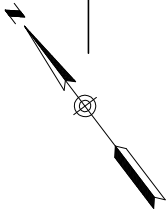
SHEET NUMBER:
A2.1
1 OF 8 SHEETS



MARK	MATERIAL DESCRIPTION	COLOR SELECTION	PAINT COLOR IS
A	CUSTOM GRANITE PLANT ON POLYURETHANE FOAM DECORATIVE GRANITE PLANT ON POLYURETHANE FOAM PRODUCTS OR EQUAL W/ 4.5 FIBERGLASS NETTING AND CEMENTITIOUS ACRYLIC COATING AND FINISH PAINT COAT	PAINT COLOR:	FAIR VORYT 8597
B	V CUT REVEAL IN CONCRETE SURFACE PER SECTION DETAILS	PAINT COLOR:	SPICE VARIETY 8637
C	TILT-UP CONCRETE WALL	UPPER MAINGOAT	FAIR VORYT 8597
D	2" RECESSED RELIEF IN CONCRETE WALL SECTION	PAINT COLOR:	FAIR VORYT 8597
E	NOMINAL 2 X 4 ALUM STOREFRONT FRAME	ANODIZED ALUM.	DARK BRONZE
F	SECTIONAL ROLL UP METAL DOOR ASSEMBLY	COLOR SELECTION	TO MATCH FAIR VORYT 8597
G	METAL DOOR AND STEEL FRAME	COLOR SELECTION	DARK BRONZE
H	METAL PARAPET CAP ASSEMBLY	PAINT COLOR	SPICE VARIETY 8637
J	12" X 12" SLATE TILE; DAL-TILE CALIFORNIA GOLD 3700		
K	TILT-UP CONCRETE WALL	PAINT COLOR:	BIG ON BEIGE 8586



FLOOR PLAN



SHEET NUMBER:
A2.2
3 OF 8 SHEETS

SHEET TITLE:
**BUILDING UNITS "C" AND "D"
FLOOR PLAN & EXTERIOR ELEVATIONS**
RIVERA INDUSTRIAL PARK
465 RIVERA ST.
RIVERSIDE, CALIFORNIA

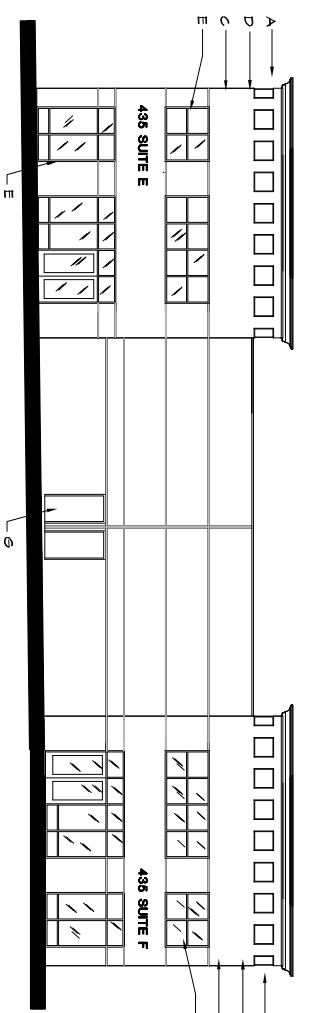
PREPARED FOR:
**OMNI WEST GROUP
RIVERSIDE, L.L.C.**
PHONE: (714) 336-2433
FAX (714) 669-2433

PREPARED BY:
**Henson Consulting
ARCHITECTS PC**
290 E. RINGGON STREET
SUITE 200
CORONA, CALIFORNIA 92709
PHONE: (951) 811-1111
FAX: (951) 811-9424

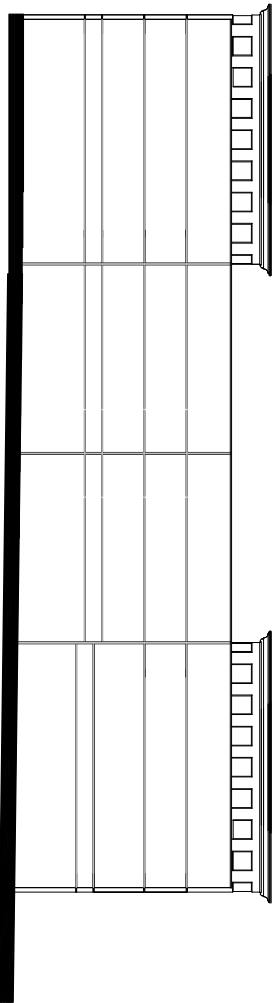


NO.	REVISION	DATE	BY
1	PC 06-2653.1,4,1,5,1,6,1	8-2-06	C.L.
2	PC 06-2653.1,4,1,5,1,6,1	11-3-06	C.L.
3	OWNER CHANGES	1-8-07	C.L.

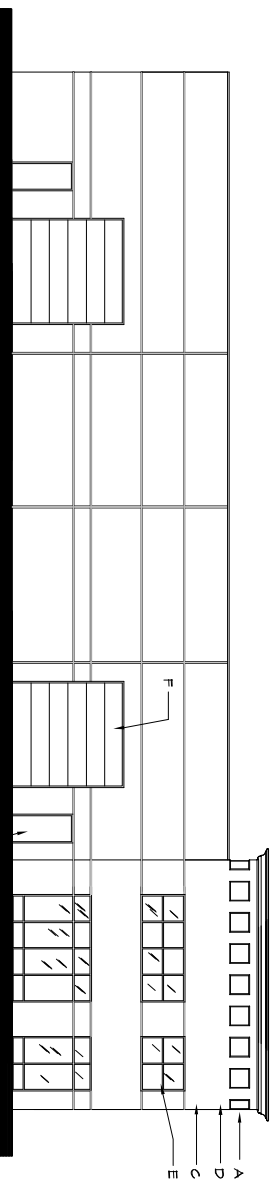
NOTICE
THIS DRAWING AND ALL INFORMATION THEREON IS THE PROPERTY OF H&C ARCHITECTS AND SHALL NOT BE COPIED OR USED EXCEPT FOR THE PURPOSE FOR WHICH IT IS EXPRESSLY FURNISHED. THE DRAWING AND ANY COPIES THEREOF, PARTIAL OR COMPLETE, SHALL BE RETURNED TO THE OWNER UPON DEMAND.



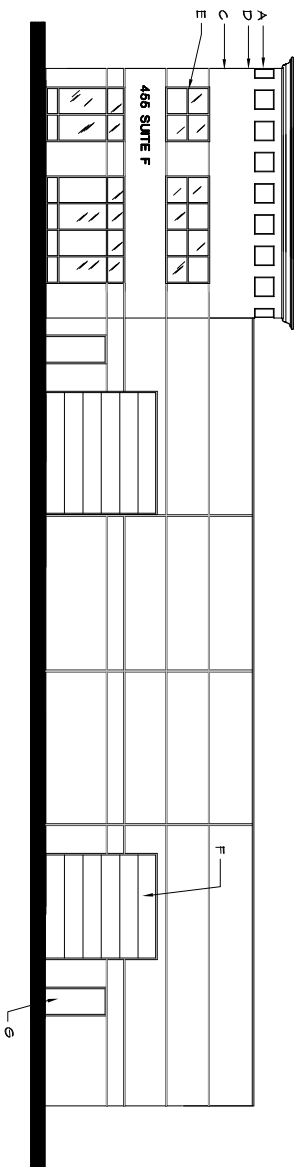
WEST (FRONT) ELEVATION



EAST (REAR) ELEVATION

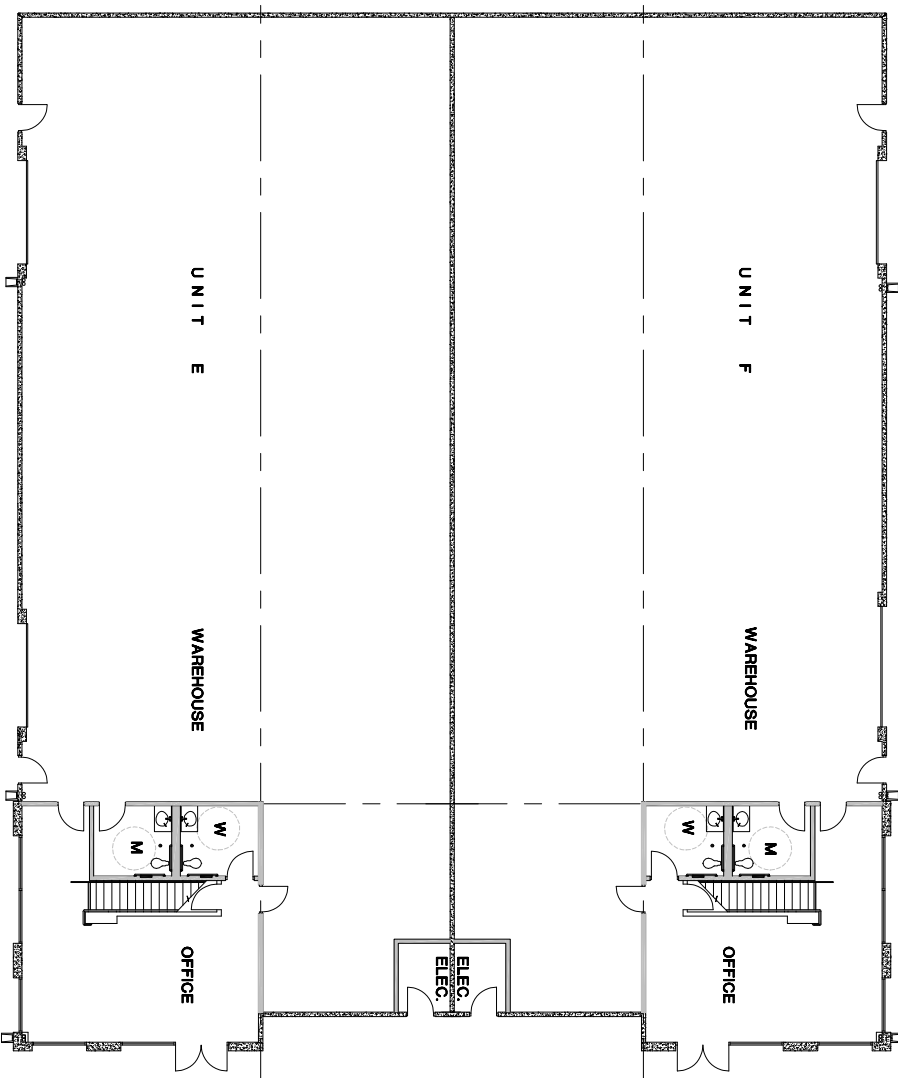


NORTH (LEFT) ELEVATION

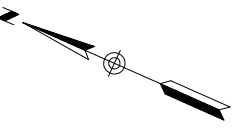


SOUTH (RIGHT) ELEVATION

EXTERIOR MATERIAL SCHEDULE		
MARK	MATERIAL DESCRIPTION	PAINT COLOR IS
A	GLASSY SHAPED PLANT-ON POLYSTYRENE FOAM DECORATIVE SHAPED PLANT-ON BY "ARCHITECTURAL FOAM PRODUCTS" OR EQUAL W/ 4.5 FIBERGLASS NETTING AND CEMENTIOUS ACRYLIC COATING AND FINISH PAINT COAT.	FAIR IVORY B587
B	V CUT REVEAL IN CONCRETE SURFACE PER SECTION DETAILS	SPICE VARIETY B637
C	TILT-UP CONCRETE WALL	FAIR IVORY B587
D	2" RECESSED RELIEF IN CONCRETE WALL SECTION	FAIR IVORY B587
E	NOMINAL 2" X 4" ALUM STOREFRONT FRAME	FAIR IVORY B587
F	SECTIONAL ROLL UP METAL DOOR ASSEMBLY	FAIR IVORY B587
G	METAL DOOR AND STEEL FRAME	FAIR IVORY B587
H	METAL PARAPET CAP ASSEMBLY	FAIR IVORY B587
J	12" X 12" SLATE TILE PALETTE CALIFORNIA GOLD ST00	FAIR IVORY B587
K	TILT-UP CONCRETE WALL	FAIR IVORY B587



FLOOR PLAN



SHEET NUMBER:
A2.3
 3 OF 8 SHEETS

SHEET TITLE:
BUILDING UNITS "E" AND "F"
FLOOR PLAN & EXTERIOR ELEVATIONS
RIVERA INDUSTRIAL PARK
 465 RIVERA ST.
 RIVERSIDE, CALIFORNIA

PREPARED FOR:
OMNI WEST GROUP
RIVERSIDE, L.L.C.
 PHONE: (714) 336-2433
 FAX (714) 669-2433

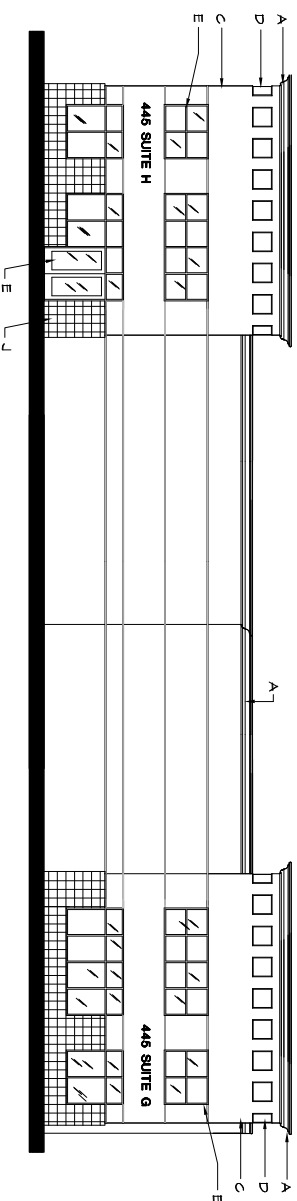
PREPARED BY:
HC&D
 CONSULTING
design
ARCHITECTS
 PC

250 E. RINGGON STREET
 SUITE 200
 CORONA, CALIFORNIA 92709
 PHONE: (951) 811-1111
 FAX: (951) 811-9424

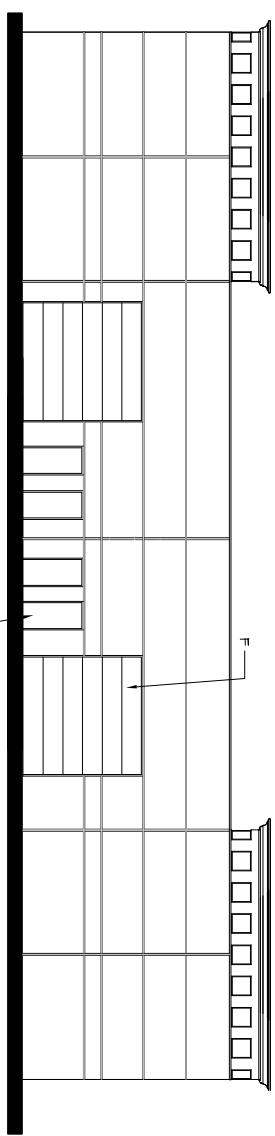


NO.	REVISION	DATE	BY
1	PC 06-2653.1,4,1.5,1.6,1	8-2-06	C.L.
2	PC 06-2653.1,4,1.5,1.6,1	11-3-06	C.L.
3	OWNER CHANGES	1-8-07	C.L.

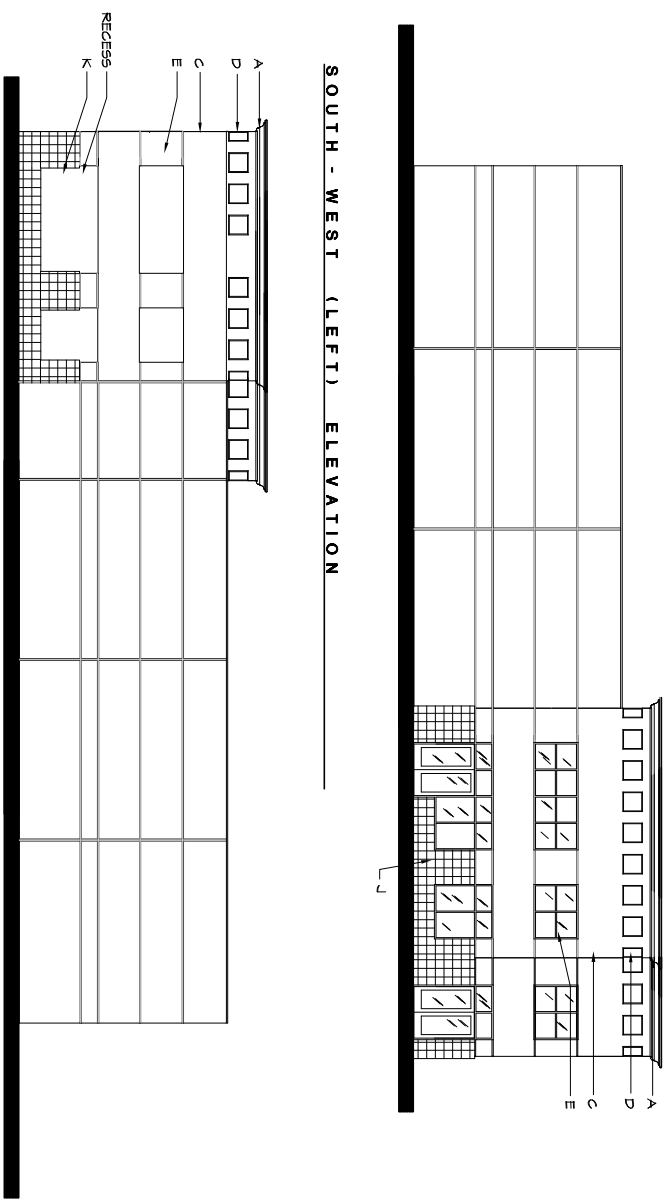
NOTICE
 THIS DRAWING AND ALL INFORMATION THEREON IS THE PROPERTY OF HC&D ARCHITECTS AND SHALL NOT BE COPIED OR USED EXCEPT FOR THE PURPOSE FOR WHICH IT IS EXPRESSLY FURNISHED. THE DRAWING AND ANY COPIES THEREOF, PARTIAL OR COMPLETE, SHALL BE RETURNED TO THE OWNER UPON DEMAND.



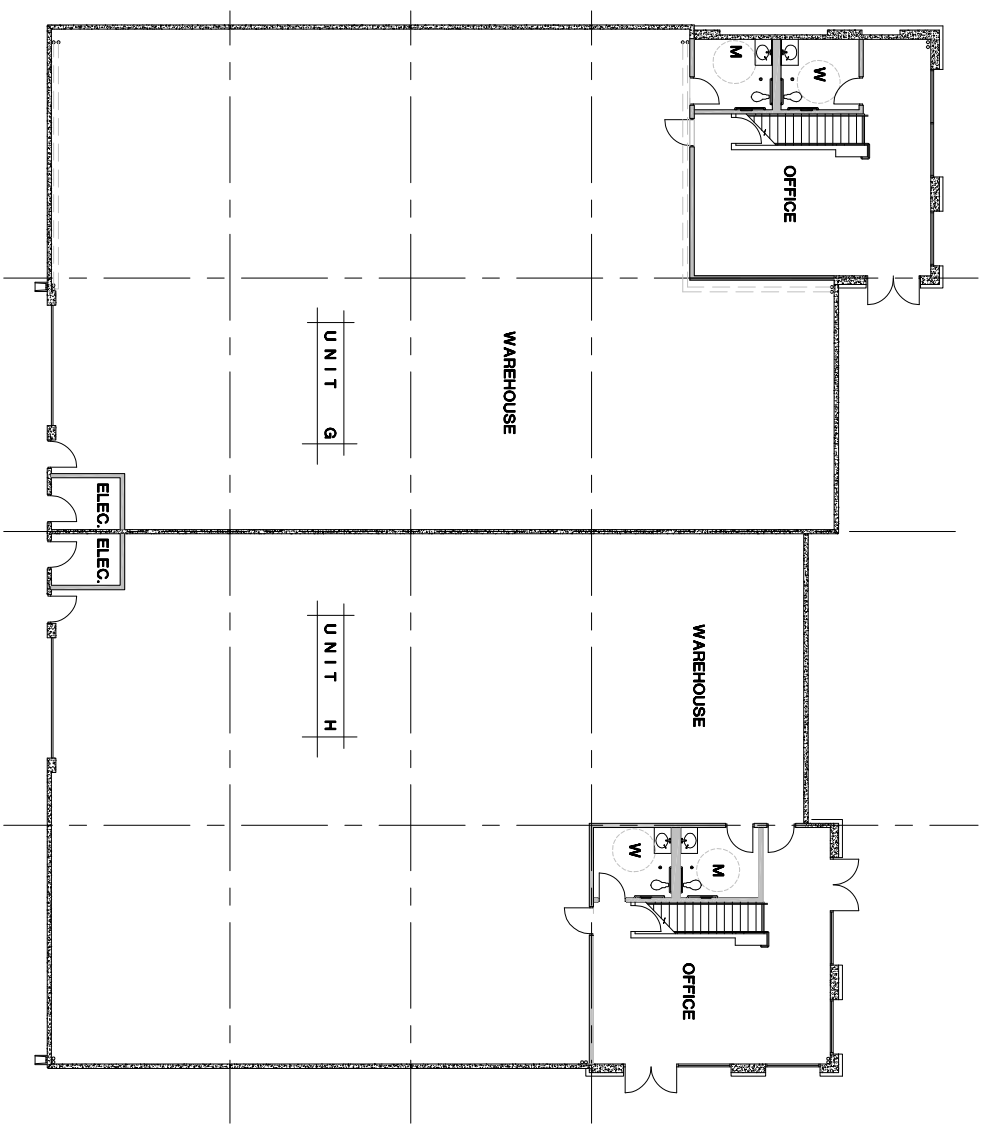
SOUTH - EAST (FRONT) ELEVATION



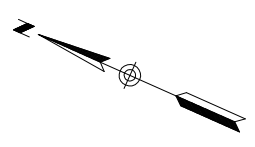
NORTH - WEST (REAR) ELEVATION



EXTERIOR MATERIAL SCHEDULE			
MARK	MATERIAL DESCRIPTION	COLOR SELECTION	PAINT COLOR IS
A	CUSTOM SHAPED PLANT-ON POLYSTYRENE FOAM DECORATIVE FINISHED PLANT-ON ARCHITECTURAL TOYAN PRODUCTS OR EQUAL AND FINISH PAINT COAT.	PAINT COLOR:	FAIR IVORY 8587
B	V CUT REVEAL IN CONCRETE SURFACE PER SECTION DETAILS	PAINT COLOR:	SPICE VARIETY 8697
C	TILT-UP CONCRETE WALL	LOWER MAINSCOT UPPER MAINSCOT	FAIR IVORY 8587 HARRIOR KING 8584
D	2" RECESSED RELIEF IN CONCRETE WALL SECTION	PAINT COLOR:	FAIR IVORY 8587
E	NOMINAL 3 X 4 ALUM STOREFRONT FRAME	ANODIZED ALUM.	DARK BRONZE
F	SECTIONAL ROLL UP METAL DOOR ASSEMBLY	COLOR SELECTION	TO MATCH FAIR IVORY 8587
G	METAL DOOR AND STEEL FRAME	COLOR SELECTION	DARK BRONZE
H	METAL PARKLET CAP ASSEMBLY	PAINT COLOR	SPICE VARIETY 8697
J	12" x 12" SLATE TILE. DAL-TILE CALIFORNIA GOLD 5700		
K	TILT-UP CONCRETE WALL	PAINT COLOR:	BIG ON BEIGE 8586



FLOOR PLAN



A2.4 3 OF 8 SHEETS	SHEET NUMBER:	SHEET TITLE: BUILDING UNITS "G" AND "H" FLOOR PLAN & EXTERIOR ELEVATIONS RIVERA INDUSTRIAL PARK 465 RIVERA ST. RIVERSIDE, CALIFORNIA	PREPARED FOR: OMNI WEST GROUP RIVERSIDE, L.L.C. PHONE: (714) 336-2433 FAX (714) 669-2433	PREPARED BY: CONSULTING ARCHITECTS PC 250 E. RINGGON STREET SUITE 200 CORONA, CALIFORNIA 92709 PHONE: (951) 521-1818 FAX: (951) 521-9424		<table border="1"> <thead> <tr> <th>NO.</th> <th>REVISION</th> <th>DATE</th> <th>BY</th> </tr> </thead> <tbody> <tr> <td>1</td> <td>PC 06-2653.1,4,1,5,1,6,1</td> <td>8-2-06</td> <td>C.L.</td> </tr> <tr> <td>2</td> <td>PC 06-2653.1,4,1,5,1,6,1</td> <td>11-3-06</td> <td>C.L.</td> </tr> <tr> <td>3</td> <td>OWNER CHANGES</td> <td>1-8-07</td> <td>C.L.</td> </tr> </tbody> </table>	NO.	REVISION	DATE	BY	1	PC 06-2653.1,4,1,5,1,6,1	8-2-06	C.L.	2	PC 06-2653.1,4,1,5,1,6,1	11-3-06	C.L.	3	OWNER CHANGES	1-8-07	C.L.	NOTICE THIS DRAWING AND ALL INFORMATION THEREON IS THE PROPERTY OF HC&D ARCHITECTS AND SHALL NOT BE COPIED OR USED EXCEPT FOR THE PURPOSE FOR WHICH IT IS EXPRESSLY FURNISHED. THE DRAWING AND ANY COPIES THEREOF, PARTIAL OR COMPLETE, SHALL BE RETURNED TO THE OWNER UPON DEMAND.
	NO.	REVISION	DATE	BY																			
1	PC 06-2653.1,4,1,5,1,6,1	8-2-06	C.L.																				
2	PC 06-2653.1,4,1,5,1,6,1	11-3-06	C.L.																				
3	OWNER CHANGES	1-8-07	C.L.																				