

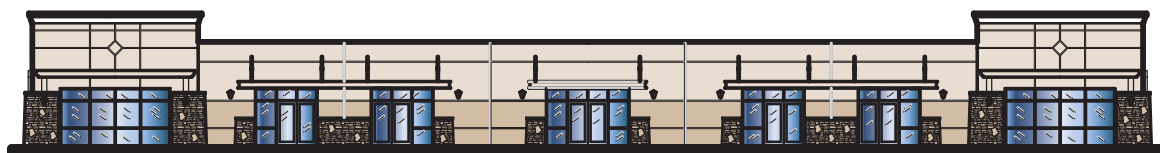
# PARKRIDGE BUSINESS CENTER: ±52,000 SF MIXED-USE PROJECT | NORCO, CA

## EXTERIOR MATERIAL SCHEDULE

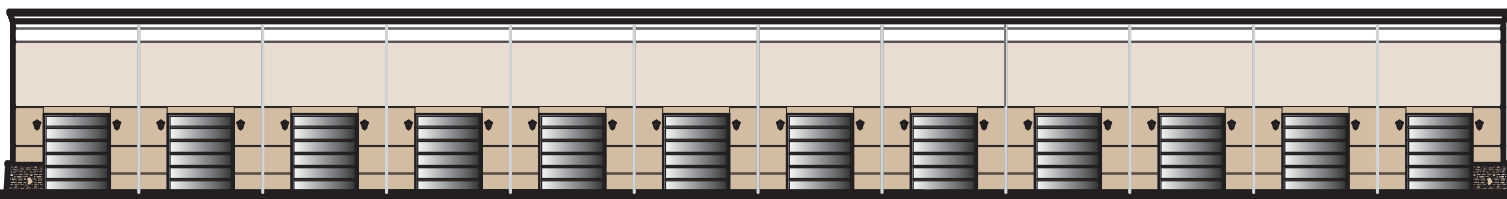
MATERIAL DESCRIPTION	DESCRIPTION	COLOR SELECTION
CULTURED STONE VENEER W/ CAST STONE CAP	2.5 x 3 STRAIGHT WALL CAP OVER 3' SLOPED STONE VENEER	STONE VENEER (ELDORADO STONE) CASCADE; RUSTIC LEDGE W/ RUBBLE
V CUT REVEAL IN CONCRETE SURFACE PER SECTION DETAILS	PAINT COLOR:	SHERWIN WILLIAMS SK7008 ALABASTER
TILT-UP CONCRETE WALL	LOWER WAINSCOT & TOWER	SHERWIN WILLIAMS SW6087 TRUSTY TAN
TILT-UP CONCRETE WALL	UPPER WAINSCOT	SHERWIN WILLIAMS SW6106 KILIM BEIGE
2" x 1" RECESSED RELEIF IN CONCRETE WALL SECTION	PAINT COLOR	SHERWIN WILLIAMS SK7008 ALABASTER
NOMINAL 2 x 4 ALUM STOREFRONT FRAME	SPECIAL-LITE	DARK BRONZE ANODIZED
SECTIONAL ROLL UP METAL DOOR ASSEMBLY	COLOR SELECTION	VISTA PAINT 876T JAVA 'N CREAM
STEEL U-CHANNEL ROOF CANOPY & WOOD PLANT-ONS	PAINT COLOR	SHERWIN WILLIAMS SW6041 OTTER
METAL PARAPET CAP ASSEMBLY	PAINT COLOR	SHERWIN WILLIAMS SK7008 ALABASTER
LANTERN STYLE WALL SCONCE	PAINT COLOR	SHERWIN WILLIAMS SW6041 OTTER
ARCHITECTURAL SHAPED FOAM PARAPET CORNICE	PAINT COLOR	SHERWIN WILLIAMS SK7008 ALABASTER
HEAVY DUTY TURNBUCKLE AND ROD SUPPORT ASSEMBLY	PAINT COLOR	SHERWIN WILLIAMS SW6041 OTTER
STOREFRONT GLAZING	TINT	DARK BRONZE TINT



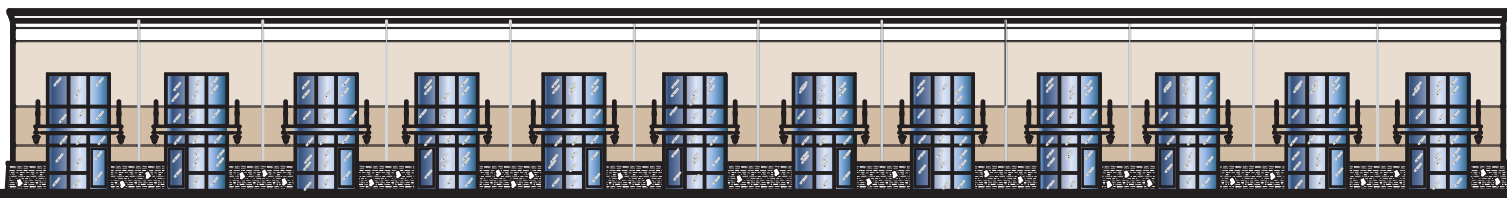
**ONE STORY OFFICE TYPICAL END ELEVATION**  
SCALE: 1/8" = 1'-0"



**ONE STORY OFFICE COMPLEX TYPICAL SIDE ELEVATION**  
SCALE: 1/8" = 1'-0"

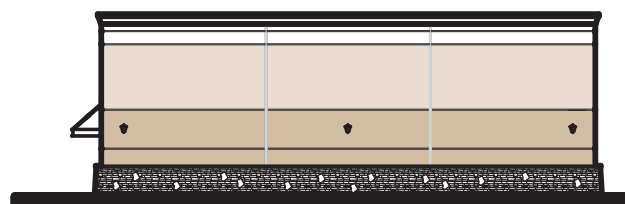


**PARTIAL TWO STORY WAREHOUSE AND OFFICE COMPLEX REAR ELEVATION**  
SCALE: 1/8" = 1'-0"



**PARTIAL TWO STORY WAREHOUSE AND OFFICE COMPLEX FRONT ELEVATION**  
SCALE: 1/8" = 1'-0"

For more info, visit: [www.parkridgecenter.com](http://www.parkridgecenter.com)



**2-STORY OFFICE WAREHOUSE END ELEVATION**  
SCALE: 1/8" = 1'-0"