

# THE *Plaza* AT LAKEVIEW



Medical/Professional Office Condominiums ±65,000 Square Feet

## FEATURES

- ◆ Architectural Highlights Include Water Feature and Atrium Plaza Link Between Buildings
- ◆ Each Floor Plate ±16,250 Square Feet; Divisible to ±700 Square Feet
- ◆ Buildings Wired for Highspeed Broadband Internet Access
- ◆ Medical Parking in Excess of 5:1000; Office Parking 4:1000
- ◆ Patient Drop-off Area at Building Entrance for Medical Building
- ◆ After-hour Secured Card-key Building Access
- ◆ Elevator Service in Both Buildings
- ◆ Build to Suit Opportunities Available

## PROPERTY

- ◆ Upscale Office Buildings for Medical/Professional
- ◆ Prestigious Professional Image
- ◆ Two-Story Impressive Mediterranean Architecture
- ◆ Visibility From I-15 Freeway With 96,000 Cars Per Day.
- ◆ Convenient Access to/from I-15 Freeway
- ◆ Panoramic Valley and Lake Views



**MANO LEVENTAKIS**  
MANO.LEVENTAKIS@GRUBB-ELLIS.COM

**ADAM ESPINOZA**  
ADAM.ESPINOZA@GRUBB-ELLIS.COM

909.605.1100

**For More  
Information**

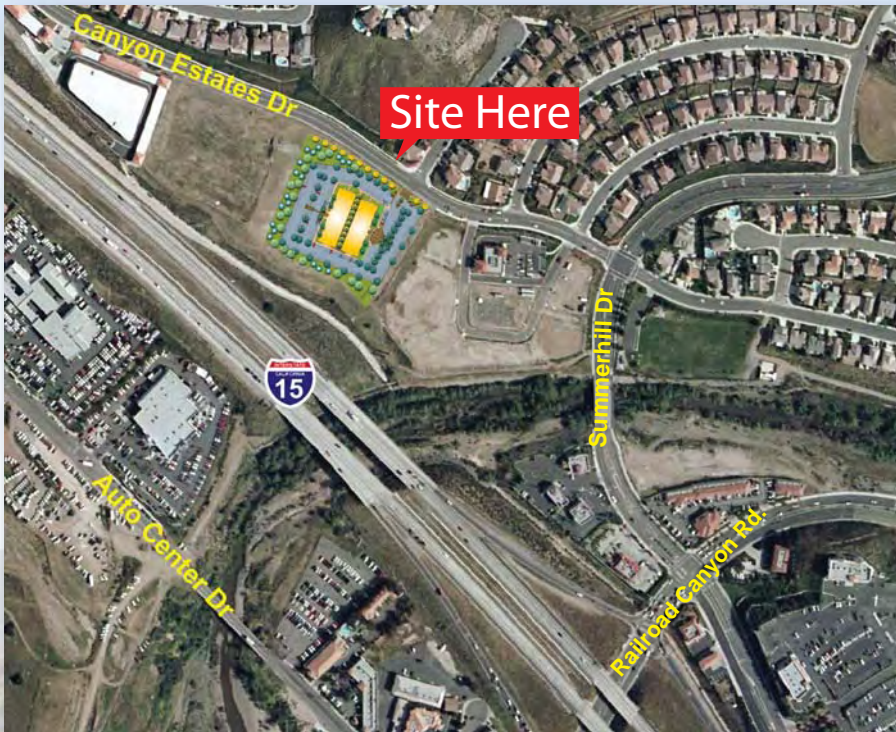
**NANCY AUSTIN**  
951.334.5500  
NAUSTIN@AUSTIN-BROCKETT.COM



**Austin-Brockett**  
COMMERCIAL REAL ESTATE SERVICES



# THE *Plaza* AT LAKEVIEW



Medical/Professional  
Upscale Office  
Condominiums  
for Sale or Lease



**Sunbelt Properties**

## FOR MORE INFORMATION

**MANO LEVENTAKIS**  
MANO.LEVENTAKIS@GRUBB-ELLIS.COM

**ADAM ESPINOZA**  
ADAM.ESPINOZA@GRUBB-ELLIS.COM

**909.605.1100**

**NANCY AUSTIN**  
951.334.5500  
NAUSTIN@AUSTIN-BROCKETT.COM



**Austin-Brockett** LLC  
COMMERCIAL REAL ESTATE SERVICES\*



**GRUBB & ELLIS COMPANY** | 3401 Centrelake Drive, Suite 500, Ontario, CA 91761 | Tel: 909.605.1100 Fax: 909.390.8645 www.grubb-ellis.com  
*The information contained herein was obtained from third parties, and has not been independently verified by the real estate brokers. Buyers/tenants should have the experts of their choice inspect the property and verify all information. Real estate brokers are not qualified to act as or select experts with respect to legal, tax, environmental, building construction, soils-drainage or other such matters.*